



World Health
Organization

unicef 

The UNICEF logo, which depicts a mother holding her child, with a globe in the background, all surrounded by a laurel wreath.

The WHO-UNICEF Immunization Supply Chain & Logistics Hub

Overview of objectives and strategy

The iSCL Hub is a response to several acute challenges

Fragmented evidence and insights for countries on iSCL topics

“

“Countries don’t know where to go for guidance”

“Lot of good materials get created, but then they disappear because no-one owns them and makes them available to countries”

“Countries at times receive contradictory advice ... a UNICEF consultant may recommend one thing, the next month a WHO consultant recommends another thing...How do you expect countries to react?”

”

Opportunity to strengthen coordination of technical assistance to countries

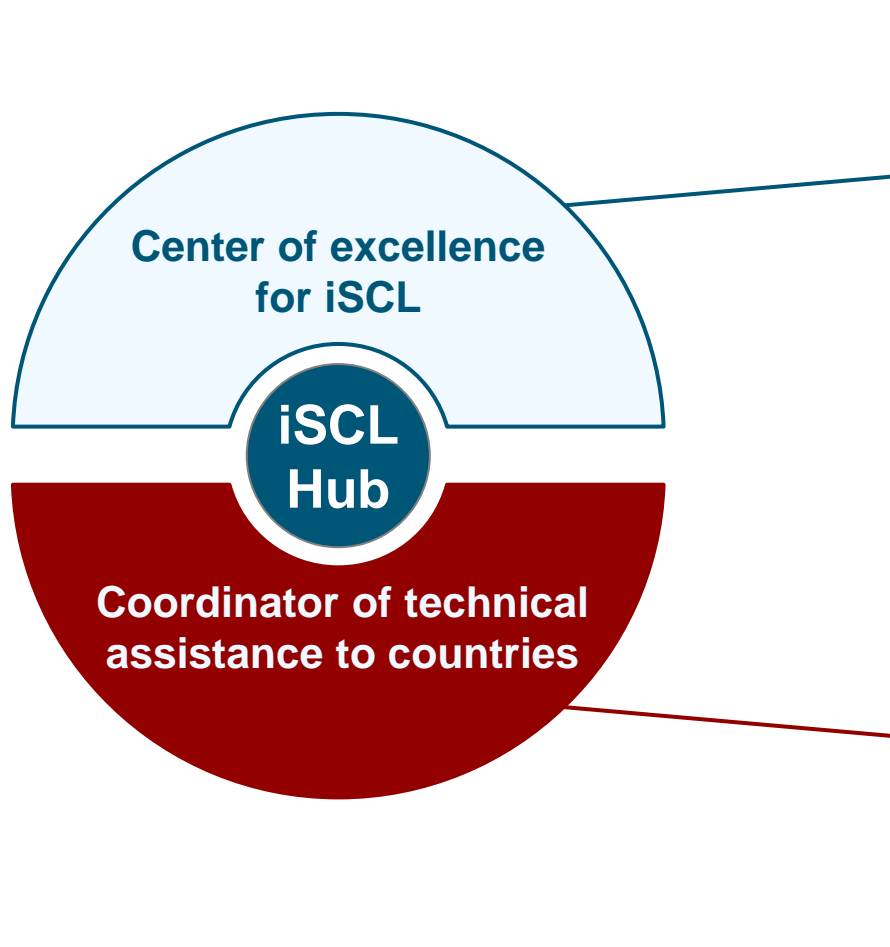
Historical challenges in aligning global partners

“

““No-one was coordinating funding priorities and strategies across different organizations and different countries”

“The Hub could multiply exponentially the individual impact of each agency”

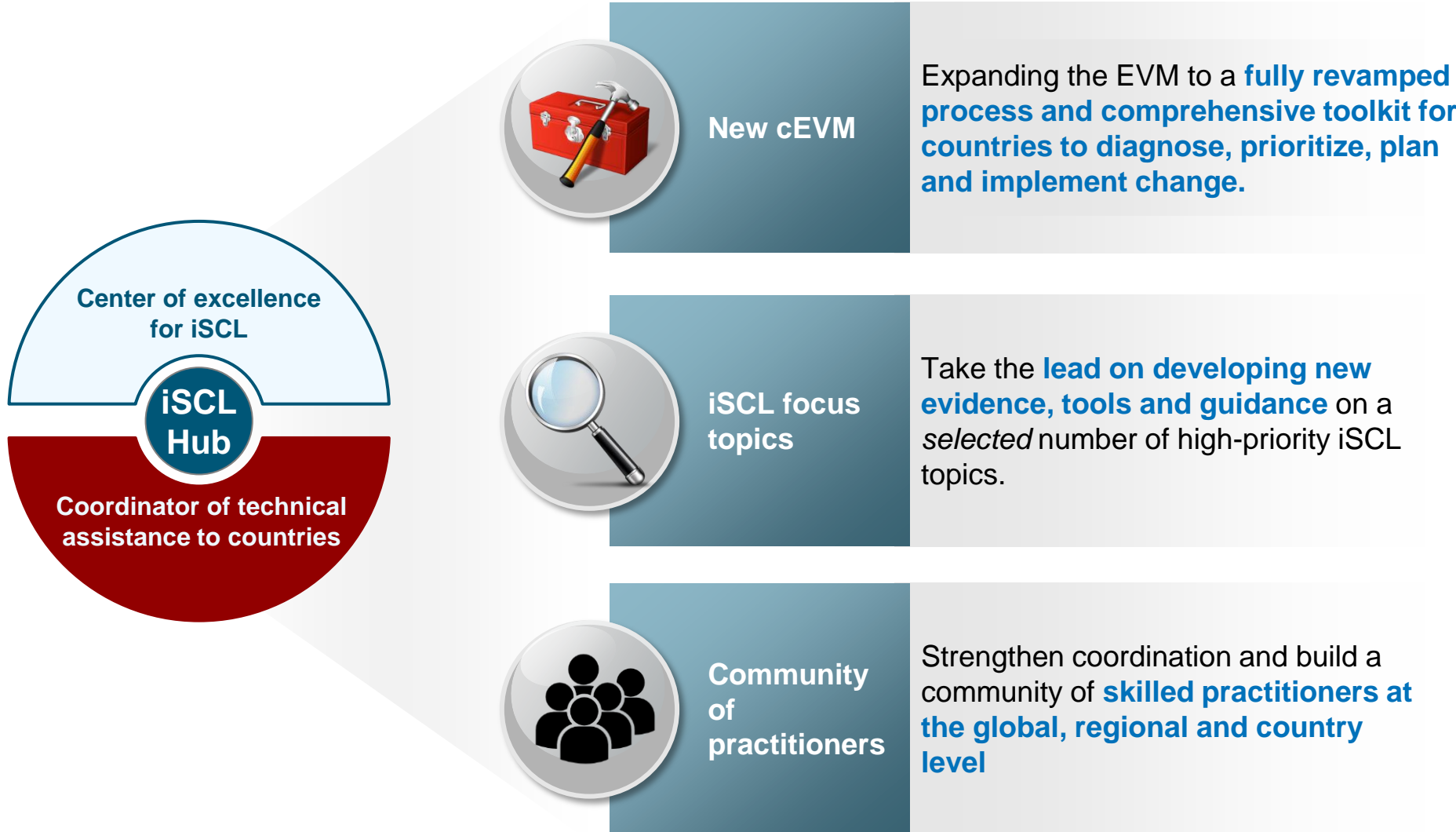
The Hub aspires to play two roles



- Best-in-class iSCL tools, guidance and evidence – review and fill gaps
- Support countries navigate and access the right expertise and materials

- Support countries strengthen iSCL planning and execution
- Ensure agencies, MoH and other partners are aligned around a common iSCL plan anchored in the overall EPI strategy
- Build local capability over time

We will pursue these goals via three strategic pillars



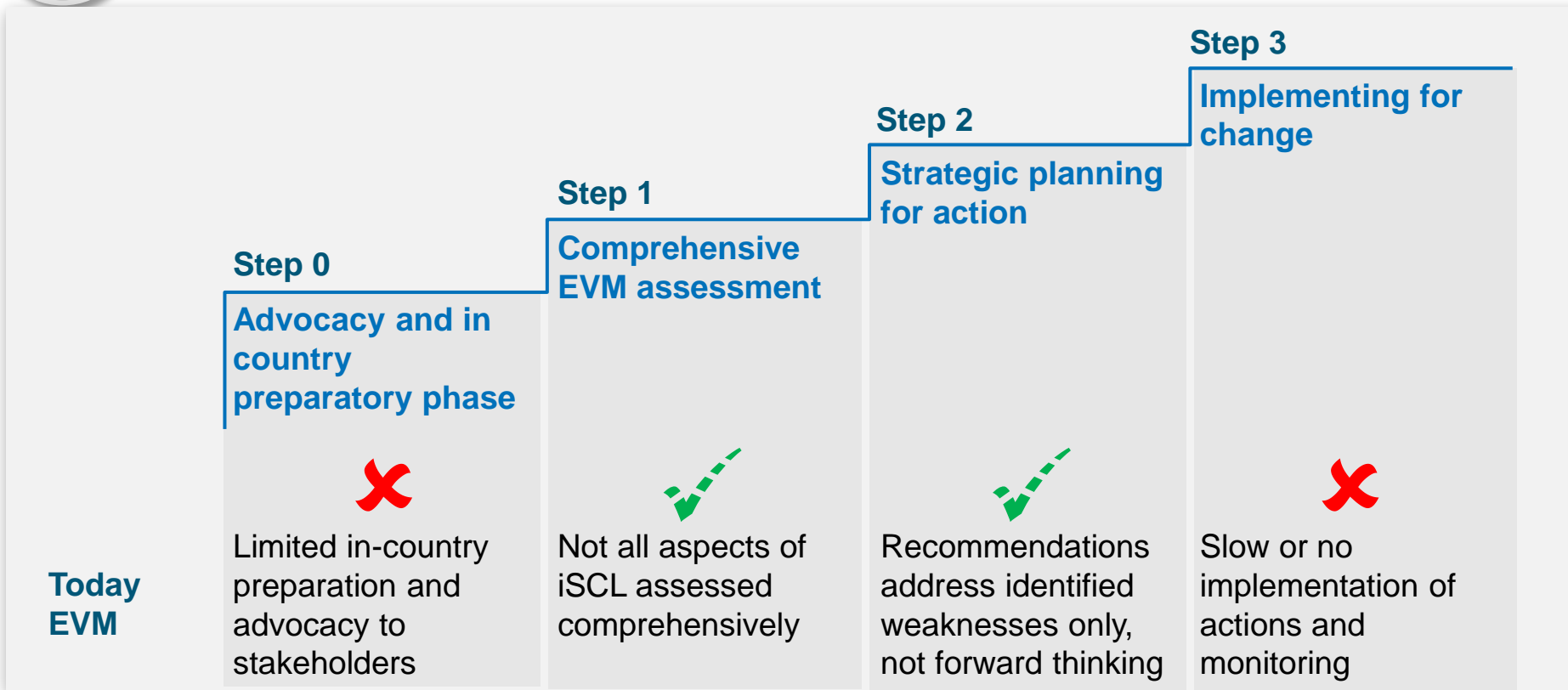
The Hub will complement, rather than replace, other partners and activities

The Hub will not...

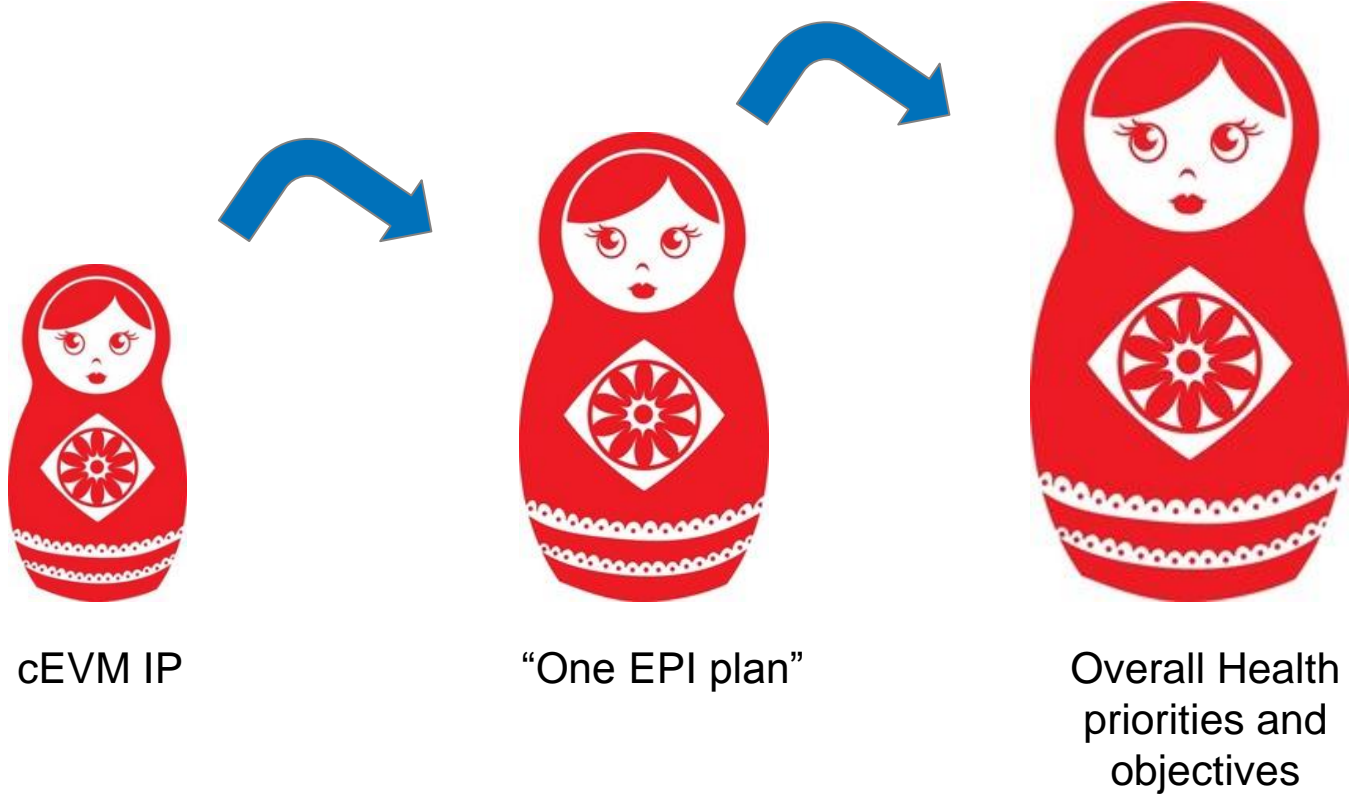
- ...take over activity best handled by individual agencies (e.g., purchasing by SD, regulatory pre-qualification by PQS) or other Alliance partners (e.g., funding by the GAVI Secretariat, market shaping by BMGF)
- ...duplicate the work of the GAVI Alliance working groups (but will coordinate UNICEF and WHO input to these groups)
- ...aim to tackle all iSCL issues but rather focus on areas of greatest unmet need that are not well-addressed by other partners
- ...limit its support to GAVI-eligible countries – differentiated levels of support will be available for all countries that need it
- ...create parallel structures to existing agency Country and Region Offices – it will work with COs and ROs to provide them with the right tools and support to be effective partners to local governments



The cEVM will include rigorous, systematic diagnostic, planning and execution

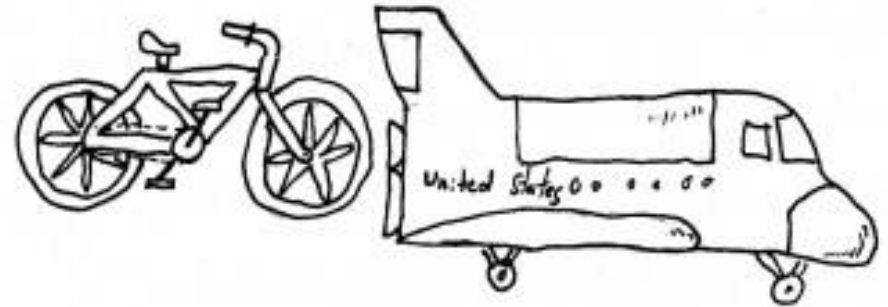


cEVM IP should be built into cMYPs and National Health Plans to ensure high-level buy-in





Putting the pieces together...



Good Bike

Bad Bike



The Hub will take the lead on generating evidence and tools for a small set of high-priority topics

The Hub will focus on areas where:

- *There is a high unmet need for additional guidance in countries*
- *There are clear gaps in the evidence base / toolkit*
- *There is no other natural owner*
- *Better tools/evidence could lead to significant impact across a wide range of countries*

List of topics will be regularly re-evaluated and updated as needed

Initial focus topics:

- 1. CCE technologies and markets**
- 2. CCE management systems**
- 3. Temperature monitoring systems**
- 4. Redesign, network & transportation optimization**



Example focus topic : Temperature monitoring systems

Current state / rationale

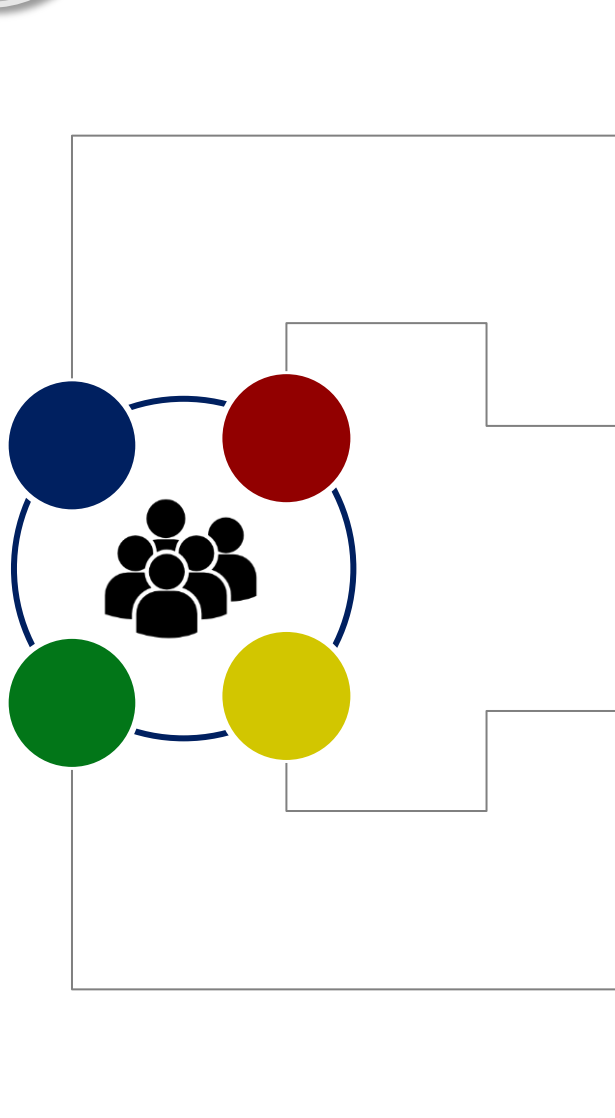
- Major challenge in EVM
- Wide range of technologies
- Fragmented guidance on implementing temperature monitoring systems
- Naturally benefits from coordination across PD, SD and WHO, e.g. developing TPPs

Hub commitments (not exhaustive)

- Develop **guidance, protocols, and training** materials for selecting, installing and managing temperature monitoring systems
- Support the definition of **common data standards** to ensure interoperability
- Support process to define **TPPs** and assess performance of existing technologies
- Create **“buyer’s guide” for temperature monitoring systems** to help countries in selecting the most appropriate technology
- Compile and analyze a **global database of temperature monitoring** studies to provide a robust fact-base to inform policy and TPPs
- Support countries to conduct **cold room temperature mapping** and **temperature monitoring studies** and implement monitoring systems



The Hub will support the development of a community of skilled practitioners that help to perpetuate change in countries



Significantly **strengthen the iSCL support provided at the regional level** of UNICEF and WHO

Build a pool of **pre-vetted consultants and institutions** that are well-versed with the latest guidance and methods and can provide support to countries

Integrate Hub content into existing and new **training centers**, such as Logivac and the East Africa Center of Excellence

Facilitate **South-to-South networks of iSCL practitioners** (e.g., TechNet)

Achievements to date – selected examples

- GAVI SCS Strategy
- Reviewed BMGF SCS
- GAVI CCE Funding Platform



New cEVM

Countries supported in comprehensive improvement planning: Bangladesh, Pakistan, Myanmar, Laos, Nepal, Comoros, DRC,...

EVM Global Data Analysis shared and **EVM Assessment review** started integrating best practices from public and private sector



iSCL focus topics

- Zanzibar meeting – drove to new TPPs for RTMDs, new tools and guidance
- Workshop on independent freeze free passive carriers workshop (NYC): align on innovative approaches and PQS
- Redesign: EVM evaluation with AMP and working group launched ...



Community of practitioners

Technet meeting South-South Exchange

- Sending DRC EPI logisticians to Turkey to study drive-in cold warehouse
- Sponsoring training for solar installation and maintenance and LOGIVAC
- Sending technicians from Haiti to Benin

- Implementation of the GAVI SCS strategy