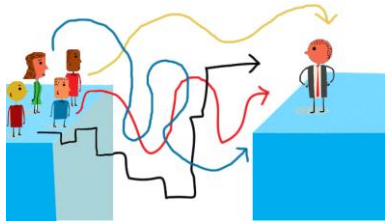


Evidence-managed iSC

Immunisation Supply Chain Management Process & Dashboard

UNICEF
April 2019

What is this proposed methodology?



Management process

It is a management process that allows the EPI manager to **proactively manage an evidence-based** immunisation supply chain



Holistic view of the system

The linkage of long term workplans, with a monitoring framework and KPIs **provide a comprehensive view** of the immunisation program



Triangulates data

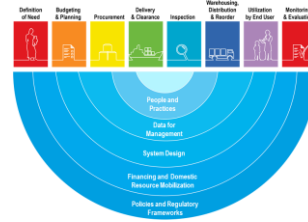
The triangulation of **SC indicators with programme outcomes** allows a deeper understanding of the efficiency levels of the EPI

Process & Dashboard components



EVM Assessment

The EVM **monitors and assesses immunization supply chains** and supports countries to improve their operational performance



Maturity Scorecard

The scorecard is a **monitoring framework which assesses the impact of the CIPs** and provides evidence to address ever shifting priorities



Tactical Indicators

Supply operational and health outcome indicators are collated and matched to support tactical level analyses

Benefits of this process



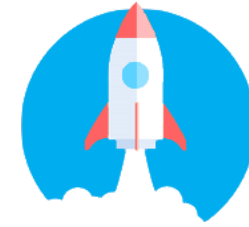
Evidence-managed iSC

The links between planning, M&E and tactical indicators allow a **proactive evidence-based management** of the iSC



M&E Framework

This model allows the **evaluation of achieved impact and a systematic method to identify priorities** amid dynamic situations



Starting point

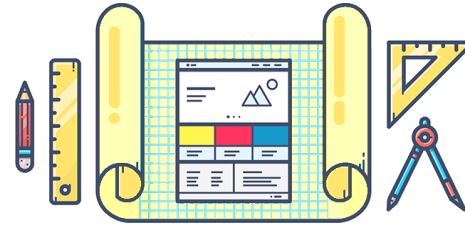
This process serves as a **starting point** to discuss the need for high-level integrity data and a proper M&E system

Critical Success Factors



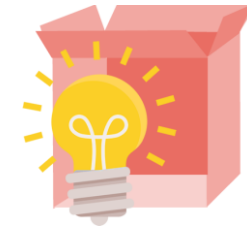
Trained MoH staff

Competent and engaged personnel who transform data into actionable evidence to technically lead national systems



Informed decisions

By triangulating different sets of data and **transforming it into actionable information** it supports an evidence-based decision making process



It's a process, not a tool

This process is tool-agnostic and **leverages already in-place enablers** to promote sustainable approach to exploit already available data

Avoiding confusion .. What **won't** this process do?



Not a stock management system

It is not a stock management nor a transactional registration tool but a **management process** that leverages different sets of data



Not another tool

It is not an isolated or stand-alone tool but **an enabler for managers to perform a multi-variable analysis** before taking strategic decisions

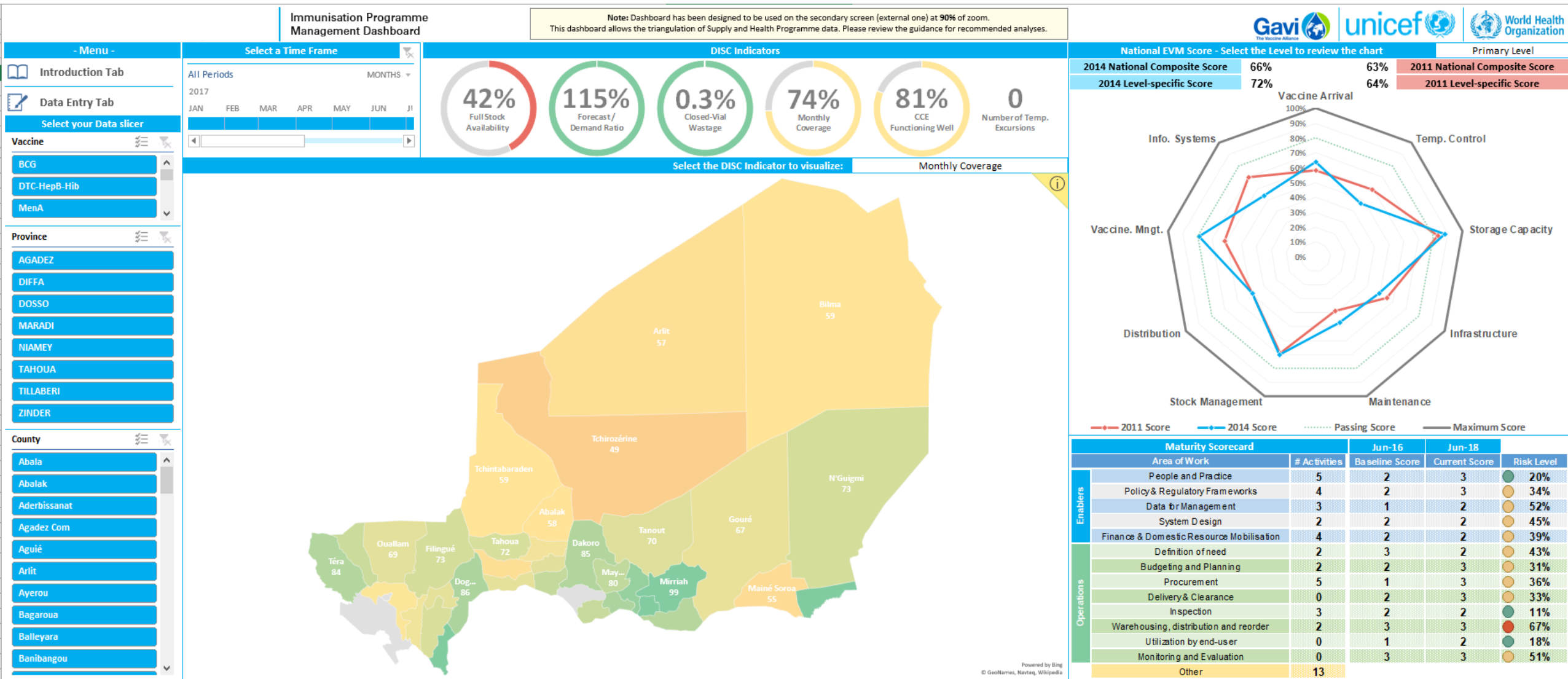


Not a report to donors

It is not a mechanism to report to donors, but a process to **empower governments to become technically independent**

How will this methodology transform data into actionable evidence?

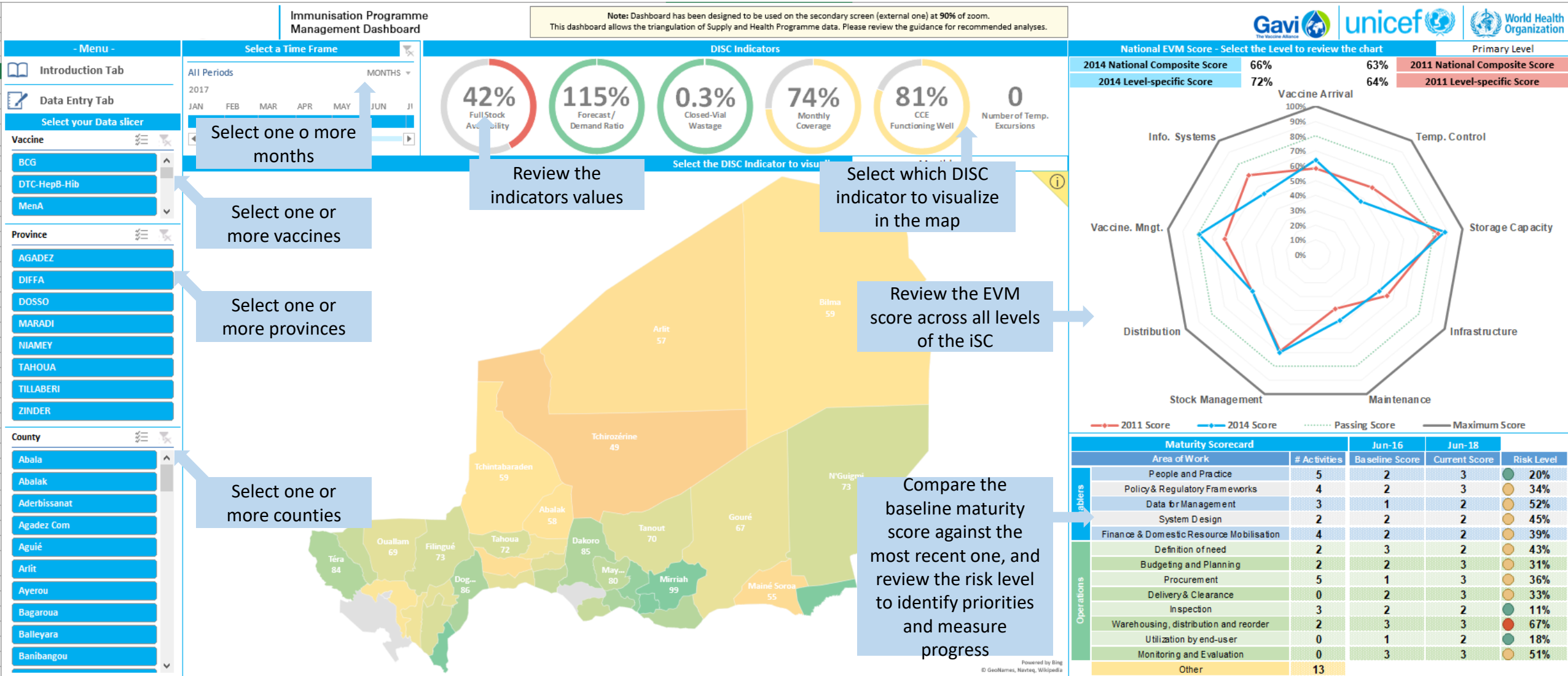
This process develops a dashboard to support the proposed multivariable analyses.



Note: All data is utilized for demonstration purposes only and does not reflect any real situation

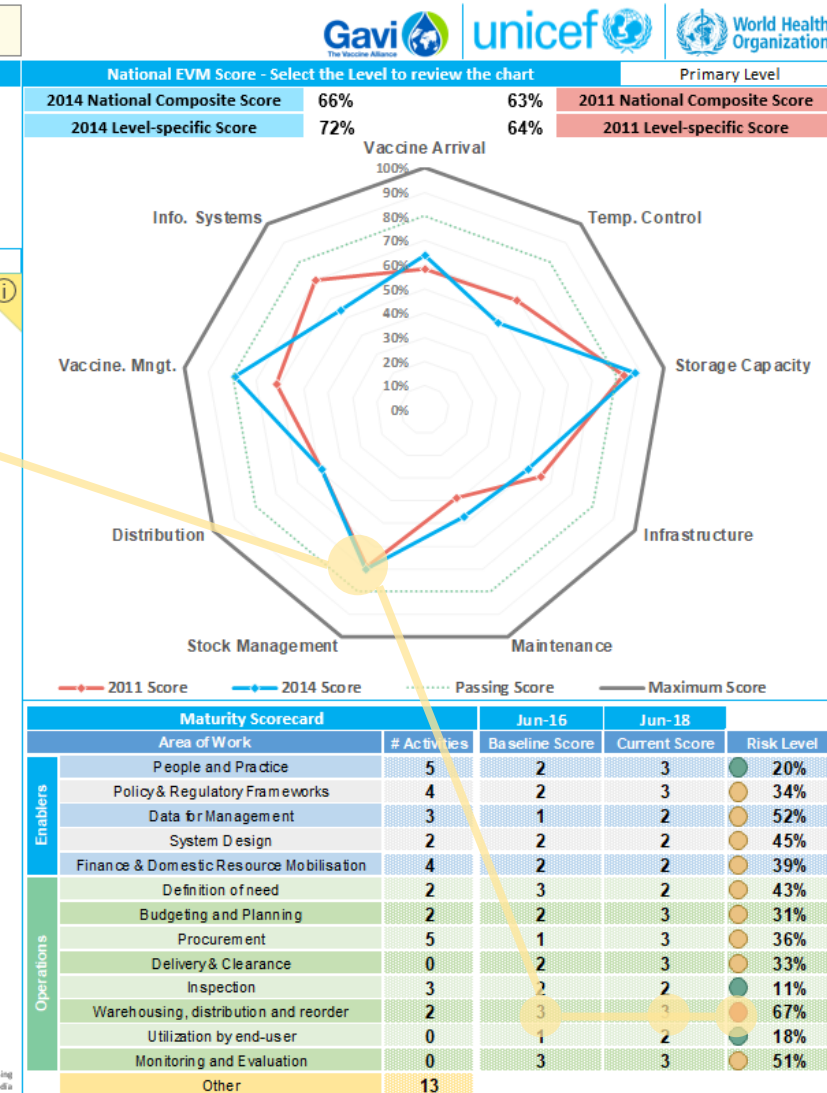
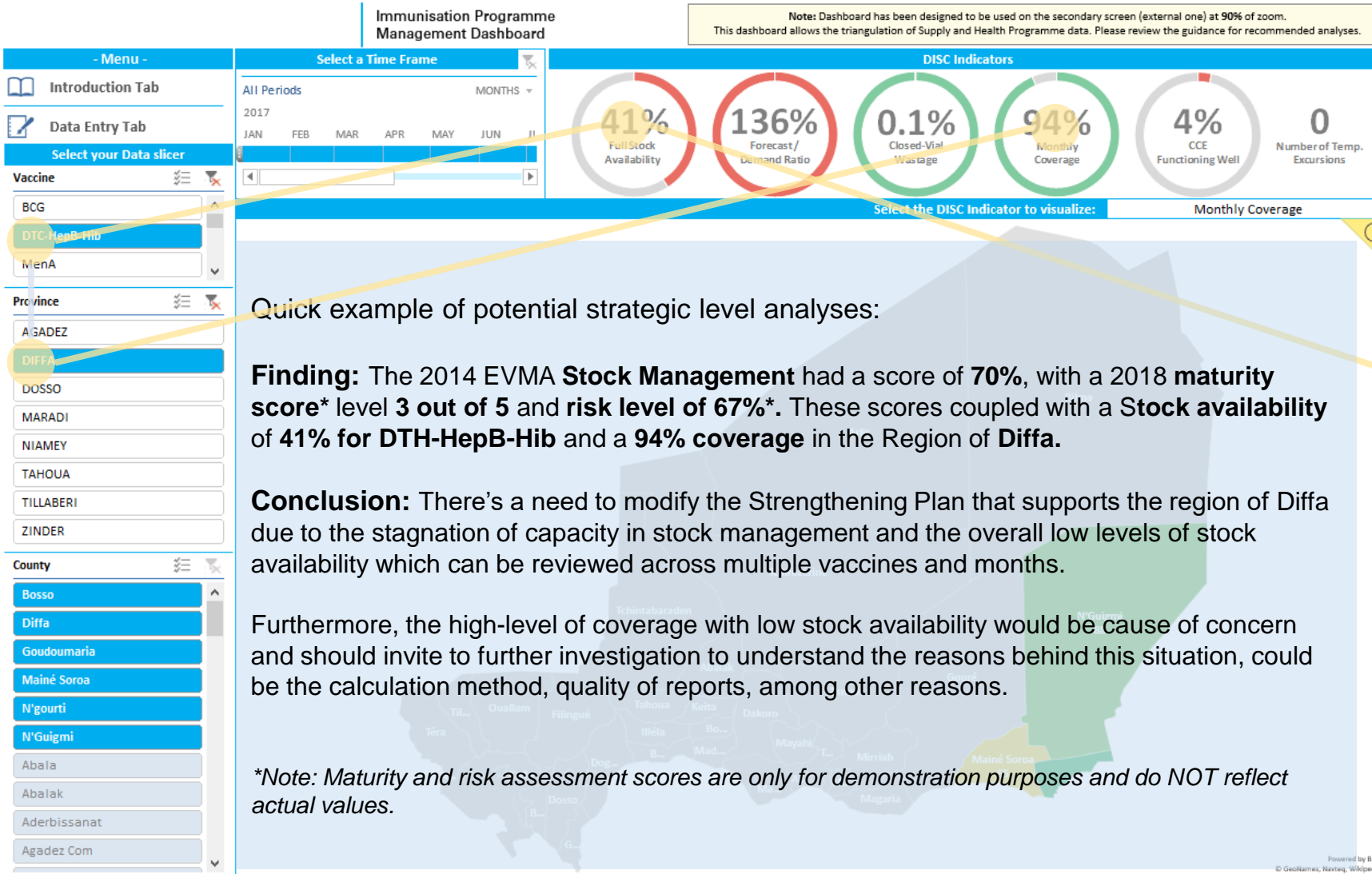
Dashboard elements

Dashboard development will leverage any already in-place platform, (i.e. e-LMIS) to avoid duplication of tools and work



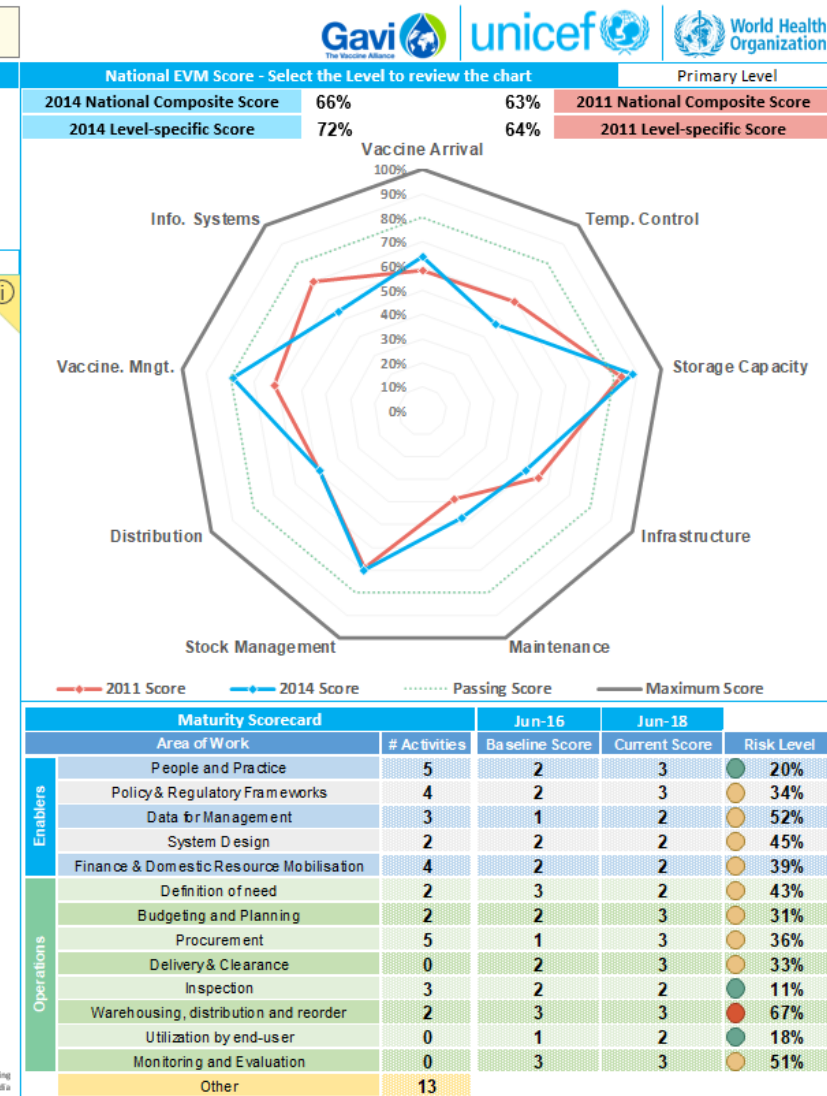
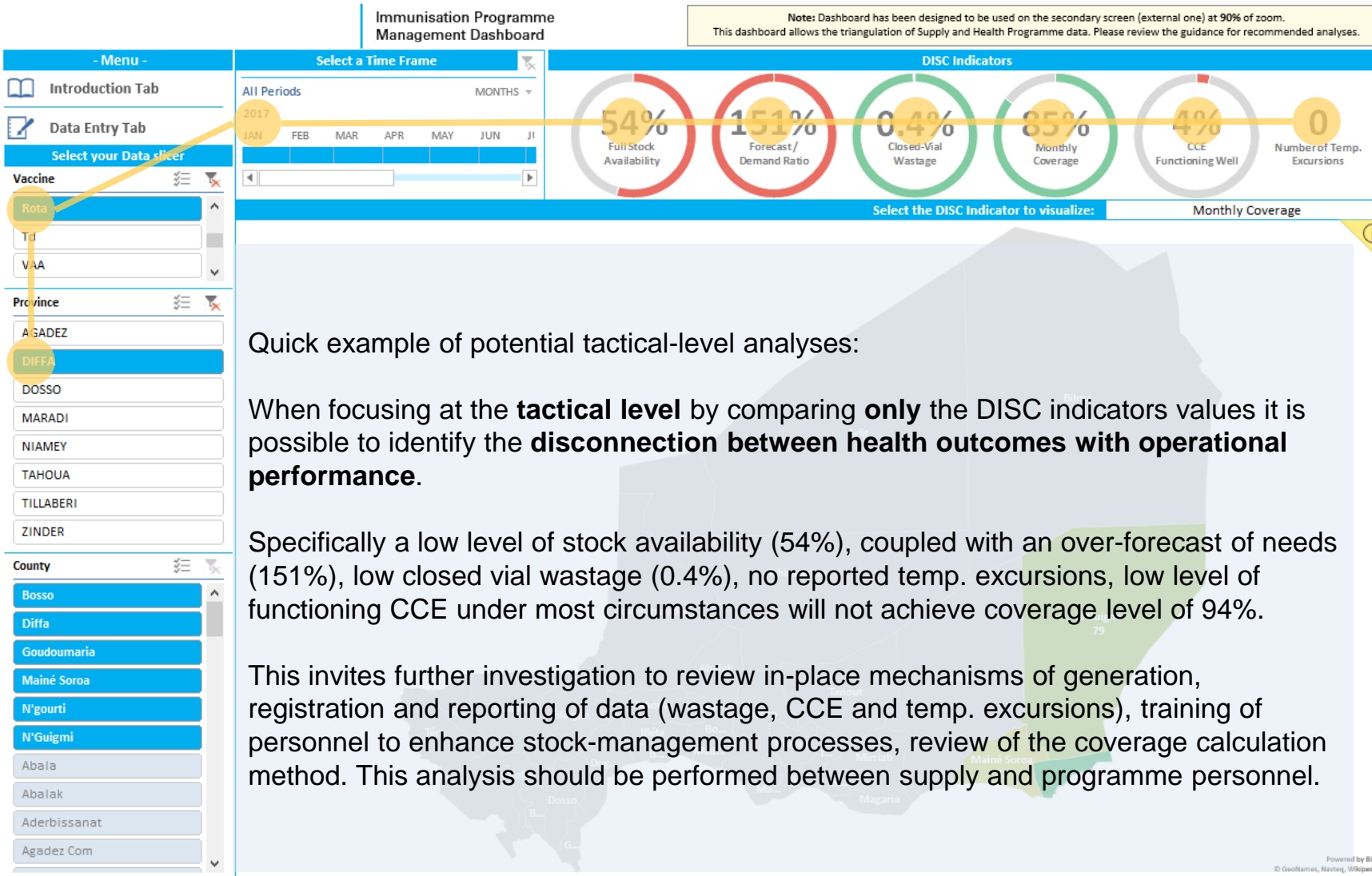
Note: All data is utilized for demonstration purposes only and does not reflect any real situation

Dashboard – Strategic Analysis



Note: All data is utilized for demonstration purposes only and does not reflect any real situation

Dashboard – Tactical Analysis



Note: All data is utilized for demonstration purposes only and does not reflect any real situation

Take-away messages



Enhances local capacity

This process allows high-level government officials to implement **multi-variable analysis** to support strategic and tactical decisions



Beginning of a journey

Analysing EPI performance through this process marks the beginning of an evidence-based **continuous improvement process** to strengthen national capacity



Complementing, not replacing

This process will look to **leverage already in-place tools and systems** not to create parallel solutions

Thank You!

To learn more about this process and how it may add value to you, please contact:

Manuel E. Lavayen

Supply Chain Strengthening Centre

UNICEF

mcelestinolavayen@unicef.org